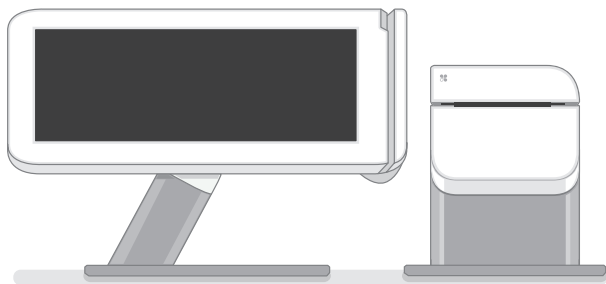




Clover Station

Feature Guide



This guide describes
Clover Station's hardware
and software features.

We are continuously
improving our software.
To see the latest version
of this guide, visit
clover.com/setup.

In Europe, visit eu.clover.com/setup

What's included



Clover Station display



Receipt Printer



Power brick



Deposit bag



Receipt paper x2



Power
(region specific)



Display



Ethernet

Optional Accessories



Cash Drawer

(And more: barcode scanner, label printer, kitchen printer)

See complete list: clover.com/pos-hardware/accessories

Get to know your Clover Station

Views



Merchant Facing



Customer Facing

Rotate the display to switch smoothly between merchant-facing and customer-facing mode.

Optional Configuration

Clover's hardware design adapts to your needs by offering multiple USB ports for additional configurations.







Clover Mini + Clover Station

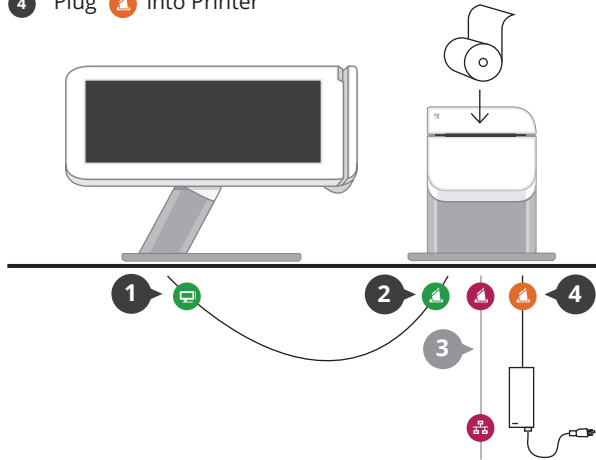
For more details visit clover.com/setup.

Set up your Clover Station

Video set up: clover.com/setup
Europe: eu.clover.com/setup

Connect the cables to the hardware in this order:

- 1 Plug  into Display
- 2 Plug  into Printer
- 3 Plug  into Printer (optional if using a wireless network)
- 4 Plug  into Printer



Getting Started



Setup Wizard

This is your guide for setting up Clover Station. Your activation code is in your welcome email.



Home

Use your Clover Home screen for quick access to all your Clover apps. Employees can also log in and out from here.



Applications



App Market

The power of Clover's system is in the variety of applications available for download to suit your specific needs. We're adding new ones all the time, so be sure to check our App Market periodically.



Register

Ring Up Transactions

Your home base for quickly creating and charging for orders. View all of your items in one place.



Tables

Full Service Table Management

Full service restaurants: this is your home. Assign tables to servers and manage table ordering, printing, and paying from here.



Orders

Order Central

Track and find your orders, add tips, and refund payments.



Customers

Get to know your customers

Quick access to your customers and their latest orders allows you to serve them better.



Reporting

Analytics in an instant

Reports give you powerful insight into your business. Get instant access to payments, cash logs, and employee sales.

Useful Resources



Web Access

Manage Your Apps

Some apps allow you to access them via your web browser. We've put shortcuts to these web pages at clover.com/home.

Please use Chrome, Safari, or Firefox.

In Europe, visit eu.clover.com/home



Need Help?

Visit help.clover.com, use the Help app, or call us anytime at the phone number given in your welcome email.



FCC Part 15

This device complies with Part 15 of the FCC Rules. Operation is subject to the following two conditions: (1) This device may not cause harmful interference, (2) This device must accept any interference received, including interference that may cause undesired operation.

FCC Part 15 Class B-specific

Note: This equipment has been tested and found to comply with the limits for a Class B digital device, pursuant to part 15 of the FCC Rules. These limits are designed to provide reasonable protection against harmful interference in a residential installation. This equipment generates, uses and can radiate radio frequency energy and, if not installed and used in accordance with the instructions, may cause harmful interference to radio communications. However, there is no guarantee that interference will not occur in a particular installation. If this equipment does cause harmful interference to radio or television reception, which can be determined by turning the equipment off and on, the user is encouraged to try to correct the interference by one or more of the following measures:

Reorient or relocate the receiving antenna.

Increase the separation between the equipment and receiver.

Connect the equipment into an outlet on a circuit different from that to which the receiver is connected.

Consult the dealer or an experienced radio/TV technician for help.

FCC Warning

Changes or modifications not expressly approved by the party responsible for compliance could void the user's authority to operate the equipment.

FCC exposure limit compliance statement (SAR statement)

This equipment complies with FCC radiation exposure limits set forth for an uncontrolled environment. End users must follow the specific operating instructions for satisfying RF exposure compliance.

Industry Canada Compliance

CAN ICES-3 (B)/NMB-3(B)

This device complies with Industry Canada license-exempt RSS standard(s). Operation is subject to the following two conditions:

(1) this device may not cause interference, and

(2) this device must accept any interference, including interference that may cause undesired operation of the device.

Le présent appareil est conforme aux CNR d'Industrie Canada applicables aux appareils radio exempts de licence. L'exploitation est autorisée aux deux conditions suivantes:

(1) l'appareil ne doit pas produire de brouillage, et

(2) l'utilisateur de l'appareil doit accepter tout brouillage radioélectrique subi, même si le brouillage est susceptible d'en compromettre le fonctionnement.


The device could automatically discontinue transmission in case of absence of information to transmit, or operational failure. Note that this is not intended to prohibit transmission of control or signaling information or the use of repetitive codes where required by the technology.

- The device for operation in the band 5150–5250 MHz is only for indoor use to reduce the potential for harmful interference to co-channel mobile satellite systems;
- The maximum antenna gain permitted for devices in the bands 5250–5350 MHz and 5470–5725 MHz shall comply with the e.i.r.p. limit; and
- The maximum antenna gain permitted for devices in the band 5725–5825 MHz shall comply with the e.i.r.p. limits specified for point-to-point and non point-to-point operation as appropriate.

In addition, high-power radars are allocated as primary users (i.e. priority users) of the bands 5250–5350 MHz and 5650–5850 MHz and that these radars could cause interference and/or damage to LE-LAN devices.

IMPORTANT

If the available socket outlet is not suitable for the plug supplied with this equipment, it should be cut off and an appropriate three pin plug fitted. With alternative plugs on approved 3 amp fuse must be fitted in the plug or adaptor or in the main fuse box.

NOTE: The plug severed from the mains lead must be destroyed, as a plug with bared flexible cords is hazardous if engaged in a live socket outlet. In the event of replacing the plug fuse, use a 3 amp fuse approved by ASTA to BS 1362, ie carries the  mark.


Always replace the fuse cover, never use plugs with the fuse cover omitted.

WARNING - THIS APPLIANCE MUST BE EARTHED.

The wires in this mains lead are coloured in accordance with the following code:

Green-and Yellow	Earth
Blue	Neutral
Brown	Live

As the colour of the wiring in the mains lead of this appliance may not correspond with the coloured markings identifying the terminals in your plug, proceed as follows.

The wire which is coloured Green-and-Yellow must be connected to the terminal in the plug which is marked with the letter "E", or by the earth symbol  or coloured Green-and-Yellow,

The wire which is coloured Blue must be connected to the terminal which is marked with the letter "N" or coloured Black or Blue.

The wire which is coloured Brown must be connected to the terminal which is marked with the letter "L" or coloured Red or Brown.

Clover Network, Inc.

415 N Mathilda Ave, Sunnyvale, CA 94085, USA

EU Declaration of Conformity

Hereby, Clover Network, Inc. declares that the radio equipment type, POS Terminal is in compliance with Directive 2014/53/EU. The full text of the EU declaration of conformity is available at the following internet address:

help.clover.com/eu-compliance

The frequency band and the maximum transmitted power in EU are listed below:

2400MHz - 2483.5MHz: 20dBm (EIRP)

5150MHz - 5250MHz: 19dBm (EIRP)

5250MHz - 5350MHz: 19dBm (EIRP)

5470MHz - 5725MHz: 20dBm (EIRP)

Restrictions in AT/BE/BG/CZ/DK/EE/FR/DE/IS/IE/IT/EL/ES/CY/LV/LI/LT/LU/HU/MT/NL/NO/PL/PT/RO/SI/SK/TR/FI/SE/CH/UK/HR. 5150MHz-5350MHz is for indoor use only.

Caution: Exposure to Radio Frequency Radiation

This equipment complies with EU radiation exposure limits set forth for an uncontrolled environment. This equipment should be installed and operated with minimum distance 20cm between the radiator & your body



Clover Station 1.0 Model C100

(Wireless 802.11 a/b/g/n)

FCC ID: HFS-CS100

EU Importer

OmniPay Ltd

Unit 9, Richview Office Park, Clonskeagh, Dublin 14, Ireland



Waste Electrical and Electronic Equipment-WEEE

NOTE: This product is covered electronic equipment under the European Union's Waste from Electrical and Electronic Equipment ("WEEE") Directive (2012/19/EU). The WEEE Directive requires that covered equipment be collected and managed separately from typical household waste in all EU member states. Please follow the guidance of your local environmental authority or ask the shop where you purchased the product for collection or recycling options.